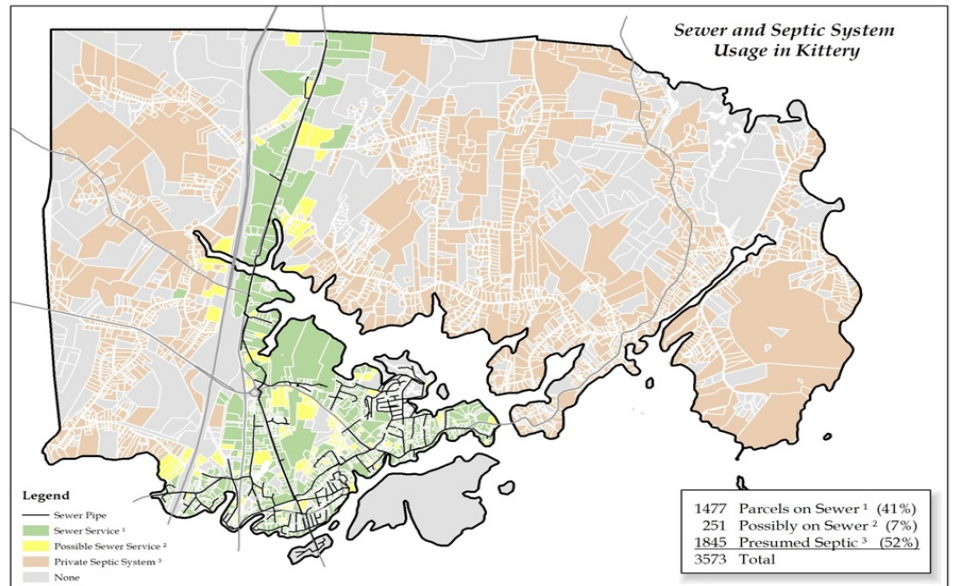




Southern Maine Planning and Development Commission Kittery Septic System Mapping and Watershed Protection Project



PARTNERS
Town of Kittery



ISSUE AREA

Implementation of the 2010 Piscataqua Region Comprehensive Conservation and Estuary Management Plan. Sustainable funding to allow municipalities to address stormwater and water quality issues.

PROJECT DESCRIPTION (completed June 2013)

The intended outcome of this project was to develop a septic system pump-out plan within threatened watersheds that includes a draft ordinance and landowner outreach components. The ultimate goal is increased water quality within the watershed.

APPROACH

- Assembled data needed for analysis.
- Map septic parcels showing public sewer systems and adjoining private septic systems.
- Relate septic parcel map to assessor's data.
- Create and analyze watersheds and shoreland areas as they relate to public sewers and private septic systems. Use overlay to highlight watersheds by percentage of parcels on septic.
- Research various other regulatory and non-regulatory strategies employed by other municipalities.
- Develop and distribute educational materials for landowners with private septic systems.
- Prepare a draft pump-out ordinance.

RESULTS

- Created a list of septage systems, owners, addresses by watershed and shoreland area with a focus on the Spruce Creek watershed.
- Developed landowner outreach material.
- Drafted septage pump-out ordinance.

NEXT STEPS AND OPPORTUNITIES

Get the ordinance adopted, continued reprinting and mailing of outreach material and expand work into other watersheds.

NEEDS

Assistance to maintain and update GIS database and strong community support for the septage ordinance.

LESSONS LEARNED

- Need more than one person leading the project.
- Be prepared to add people or adjust if there is a change in players that leaves a void.
- Start with non-regulatory ideas before proceeding to regulatory strategies.

APPLICABILITY FOR OTHER MUNICIPALITIES

- Other towns can use or adapt the GIS modeling and the assessment which fits their own local needs. The draft septic pump-out ordinance has received a good deal of review so could be used as a model.
- The public outreach brochure may be applicable anywhere with some edits.

RECOMMENDATIONS

- Provide an opportunity for ongoing GIS assistance to maintain database.
- Provide examples of other towns or projects where septage systems have fouled water bodies or resulted in negative economic outcomes.

CONTACT

Paul Schumacher, Executive Director
Southern Maine Planning and Development Commission
pschumacher@smpdc.org and 207-571-7065

FY12 CCG- 24
3.9.17.

Financial assistance provided by the National Oceanic and Atmospheric Administration, U.S. Department of Commerce Grant CZM NA10NOS4190188 to the Maine Coastal Program. Coastal Community Grants are awarded and administered by the Maine Department of Agriculture, Conservation and Forestry Municipal Planning Assistance Program.

